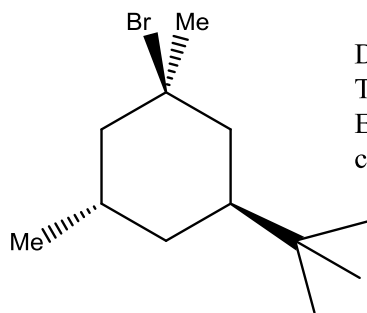


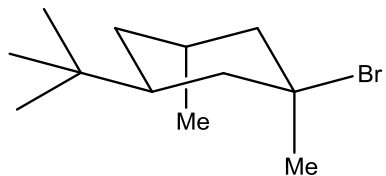
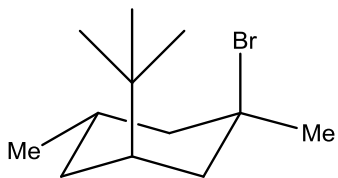
Surprise Pop – Quiz!



(1)

Draw a 3D diagram of molecule (1) in the conformation as it is shown. Then, perform a ring inversion to form its conformer. Explain which is of higher energy and therefore choose which conformer will be of higher dominance.

Answer is on next page



Higher energy due to torsional strain through 1 - 3 diaxial interactions. t-butyl group highly favours equatorial position to overcome this. Therefore the first conformer is the most stable, of lower energy (therefore second is of higher energy), and therefore the first will be of higher dominance.

